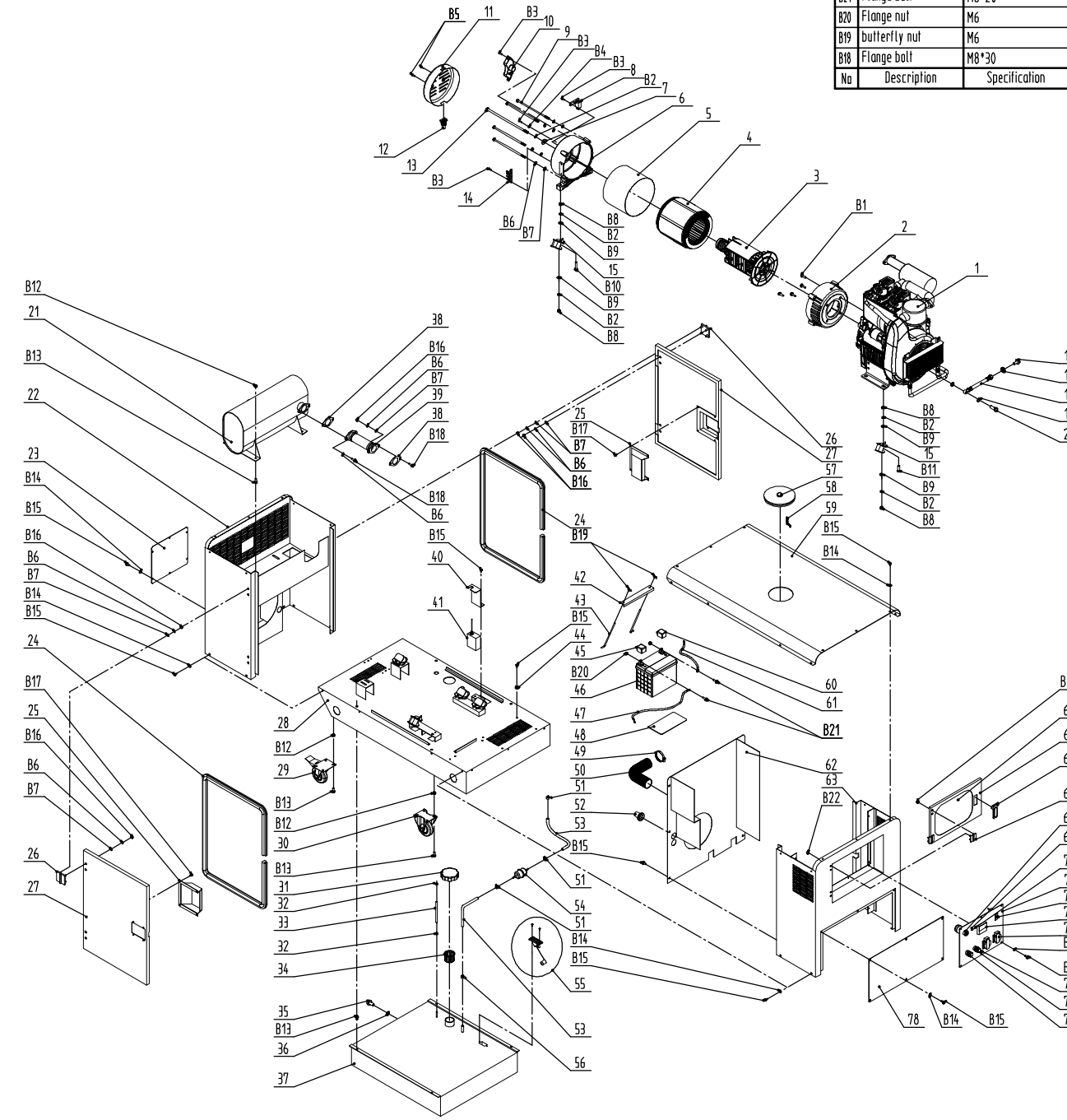


Esploro 65238 LDG12S-3



B22	Flange nut	M5	8	B17	Flange ball	M5*12	8	48	rubber plate for battery		1
B21	Flange ball	M6*20	2	B16	Hexagonal nut	M8	18	47	Black battery wire	650mm	1
B20	Flange nut	M6	2	B15	Flange ball	M6*12	49	46	battery	on-demand	1
B19	butterfly nut	M6	2	B14	Plain washer	big 6	37	45	Black battery wire sleeve	with rubber line 3MM-5MM length 600	1
B18	Flange ball	M8*30	4	B13	Flange ball	M8*20	24	44	Wind guide plate vibration damping block	LA178	4
No	Description	Specification	Qty	B12	Flange nut	M8	20	43	hook ball	LDG5000E Length:247	2
				B11	Flange ball	M10*25	4	42	battery plate	Match to the battery specification	1
				B10	Flange ball	M10*45	2	41	stop actuator	290F-12100	1
				B9	Plain washer	10	12	40	stop actuator base	LDG12-09001	1
				B8	Hexagonal nut	GB/T6170	12	39	muffler connect pipe	LDG12LS-04300	1
				B7	Plain washer	8	22	38	muffler gasket	LDG12S-04400	2
				B6	Spring washer	8	24	37	Fuel tank	LDG12LS-04300	1
				B5	Flange ball	M6*12 small head	8	36	oil drain plug washer	G1/2	1
				B4	Tooth type gasket	6 white zinc plating	2	35	oil drain plug	G1/2	1
				B3	Flange ball	M5*16	7	34	Fuel filter cup	LDG2200CL-05200	1
				B2	Spring washer	10	13	33	Fuel pipe	φ4.5*8.5	60mm
				B1	Flange ball	M10*30	4	32	Fuel pipe clip	LA170/78/86	2
								31	Fuel tank cap assy	LA170/78/86	1
								30	4 inch nylon fixed wheels	LT11000	2
				78	Maintaining board at the engine side	LDG12S-03211	1	29	4 inch nylon universal wheels	LT11000	2
				77	Red DC wiring pole	555	1	28	bat1om	LDG12S-03100a	1
				76	Black DC wiring pole	555	1	27	Soundproof enclosure	LDG12LS-04000a	2
				75	Earthing ball assy	M6*22mm	1	26	door hinge	180S05	4
				74	EU sockets	B-012 16A 250V	2	25	door lock cover	LDG12LS-04600a	2
				73	AC voltmeter	MU-45 0-300V	1	24	seal rubber strip	MFT-005	5m
				72	Air breaker	46A	1	23	battery closure plate	LDG12LS-03900	1
				71	control panel		1	22	rear closure plate	LDG12S-03300a	1
				70	Indicating lamp(green)	MDX-14(220V)	1	21	muffler	LDG12S-04200b	1
				69	Indicating lamp(red)	MDX-14(12V)	1	20	hinge joint ball	LDG12S-01310	1
				68	lock	423A	1	19	Combined seal gasket	14	2
				67	door hinge	180S06	2	18	Oil extract pipe	LDG12LS-01300	1
				66	door holder	MS738	1	17	Combined seal gasket	10	1
				65	control door	LT11000S-04000	1	16	Flange ball	M10*1.25*10	1
				64	control gale glass	230x305x5mm R10	1	15	Vibration damper washer	LDG5000-03600	6
				63	Front closure plate	LDG12S-03210	1	14	Wire connect board	φ160-φ225 series	1
				62	Wind dummy plate	LDG12S-03400a	1	13	φ225 Rotor center ball	M10x1.25*307	1
				61	Red battery wire	850mm	1	12	Alternator wire sleeve		1
				60	Red battery wire sleeve	with rubber line 3MM-5MM length 600	1	11	Rear cover	φ225	1
				59	Upper plate	LDG12S-04000	1	10	AVR	single phase 8.5kw	1
				58	Oil filter rubber cover chaining		1	9	Stator bolt	M8x240-250	4
				57	Oil filter rubber cover	LT11000S-04100a	1	8	Carbon brush assy	φ225	1
				56	fuel conveying pipe clamp	LA170/78/86	1	7	Rotor ball washer	10.6*28*3	1
				55	Fuel indicator	Length 120MM	1	6	Rotor cover	φ225	1
				54	Fuel filter	LA170	1	5	Alternator protective belt	φ225x180 c729x169 >	1
				53	fuel conveying pipe	φ7.5xφ13	70mm	4	Stator assy	10kw	1
				52	rubber bush	φ12	2	3	Rotor assy	10kW	1
				51	oil-conveying pipe clamp	LA170/78/86	3	2	Front Cover	φ225	1
				50	nylon hose	φ54.5	70mm	1	Engine	LA290	1
				49	hose clamp	φ60	1				
No	Description	Specification	Qty	No	Description	Specification	Qty				

图例	说明
○	零件名称
□	规格
△	材料
◇	表面处理
▽	备注
○	日期
□	审核
△	日期

福州龙腾伟业机电有限公司
福建永强电力设备有限公司

LDG12S 英文爆炸图

LDG12S

设计 史由游 标准 比例 1:16 审核 批准 共 张 第 张